

Allers-retours Alsace Bossue-Pérou

TROMPETTE Si \flat 2

Commande de la Fédération des Sociétés de Musique d'Alsace
pour le projet-festival "C'est pas le Pérou, mais presque", Alsace Bossue Mai 2015

Arnaud MEIER - 2014

$\text{♩} = 90$ **Introduction**

9 **A** Dans la pierre *ff*

15 **B** Les maisons troglodytes de Graufthal

22

28 **C**

34

40 **D** **E** La cité inca de Machu Picchu *à déf. Cor*

52 **F** Jouer

58

65

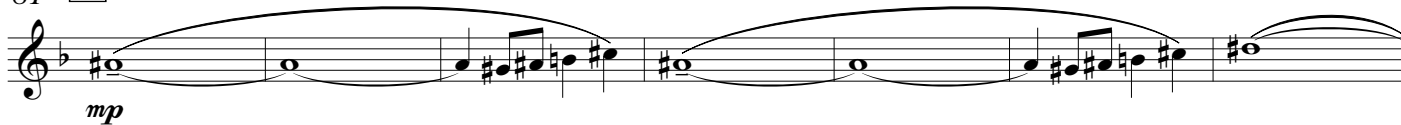
70 **G**

Detailed description of the musical score: The score is for a Trompette Si \flat 2. It begins with an introduction in 4/4 time, marked $\text{♩} = 90$. The introduction consists of a 4-measure rest followed by a melodic line starting on a half note G \flat (marked *p*), then a series of eighth-note runs. Section A, 'Dans la pierre', starts at measure 9 with a melodic line (marked *ff*) and a 2-measure rest. Section B, 'Les maisons troglodytes de Graufthal', starts at measure 15 with a melodic line (marked *p*) and a 2-measure rest, followed by a series of eighth-note runs with various dynamics: *mp*, *p*, *pp*, *mp*, *p*, *pp*, *mp*, *p*, *pp*, *mp*. Section C starts at measure 28 with a melodic line (marked *mp*) and a 2-measure rest, followed by eighth-note runs with dynamics: *pp*, *mp*, *p*, *pp*, *mp*, *p*, *pp*, *mp*, *p*, *pp*, *mp*, *p*, *pp*, *mp*. Section D starts at measure 40 with a melodic line (marked *mp*) and a 2-measure rest, followed by eighth-note runs with dynamics: *pp*, *mp*, *p*, *pp*, *mp*, *p*, *pp*, *mp*, *p*, *pp*, *mp*, *p*, *pp*. Section E, 'La cité inca de Machu Picchu', starts at measure 40 with a melodic line (marked *mp*) and a 2-measure rest, followed by eighth-note runs with dynamics: *pp*, *mp*, *p*, *pp*, *mp*, *p*, *pp*, *mp*, *p*, *pp*, *mp*, *p*, *pp*. Section F, 'Jouer', starts at measure 52 with a melodic line (marked *mp*) and a 2-measure rest, followed by eighth-note runs with dynamics: *mp*, *f*, *mp*. Section G starts at measure 70 with a melodic line (marked *mp*) and a 2-measure rest, followed by eighth-note runs with dynamics: *mp*.

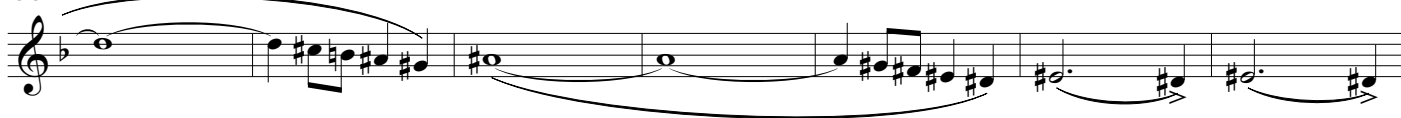
75



81 **H** La montagne aplatie et les géoglyphes de Nazca

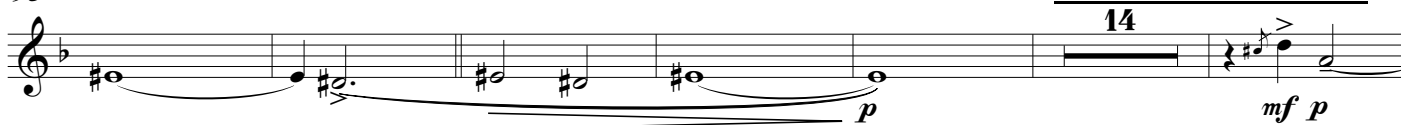


88



95 **I** Les bosses de l'Alsace Bossue

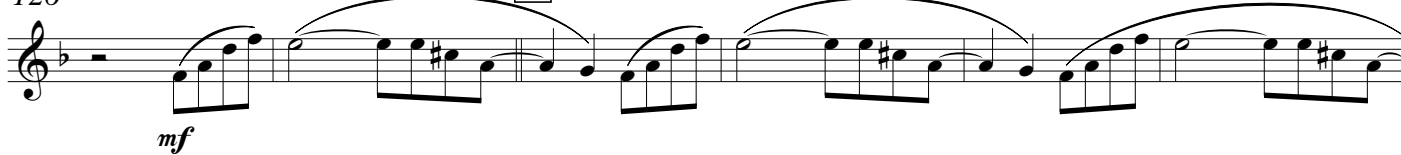
14



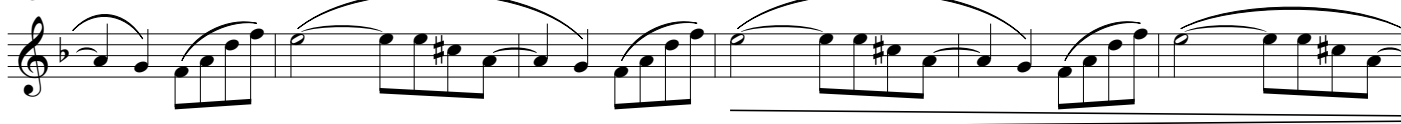
115



126 **K** Transition



132



138

II) Danses, animaux et fêtes

à déf. Cor



144 **L** Marche alsacienne du lama

Jouer



150



156

M



162

168

[N]

pp

176

[O] $\text{♩} = 102$

Marinera du bouc des environs de Bouquenom

f

182

189

[P] [Q]

pp

204

[R]

f

211

218

[S]

ff

225

p

232

[T] $\text{♩} = 90$ Conclusion

ff

239

mp